

A photograph of an outdoor seating area for 'The Hub on Verulam'. The scene is set in a courtyard with a paved floor. In the background, there's a building with a grey tiled roof and a sign that reads 'THE HUB on Verulam'. A white awning covers the entrance area. To the right, there's a white brick wall with arched windows. The courtyard is filled with people sitting at tables, some of which are covered with large, dark blue planters containing various plants. String lights are strung across the courtyard. The overall atmosphere is relaxed and social.

MEMBERSHIP

at

THE HUB  
*on Verulam*



## Contents

- 02. WHO WE ARE
- 03. SOCIAL MEMBERSHIP
- 04. WORKING MEMBERSHIP
- 05. TEAM MEMBERSHIP
- 06. MEMBERSHIP PRICING
- 07. MEETING SPACES & DDR PACKAGES
- 08. MEMBERSHIP EVENTS
- 09. CONTACTS & MAP



## Who We Are

We are a stylish, social space to create and connect with your *community.*

We show live sport, independent cinema, community events and comedy in our 2 screening rooms. We have live music every month. We host pop-ups.

THOV's opening follows a year-long refurbishment of the venue, with the renovation being carefully curated to feature the works of many local artists and makers. The end-result?

A multi-use space incorporating an Open Kitchen restaurant, events space, bar, outdoor bar, 2 cinema screening rooms, a co-working space and a deli.

There's *nothing else* like us here.







## Social Membership

- A complimentary barista coffee, tea or soft drink every time you visit
- Free film tickets
- Discounted tickets  
*For workshops and Hub events*
- 50% off all Members Choice Food & Drink
- 10% off food for your entire table  
*\*excluding promotional items*
- An invitation to member only events
- The ability to exclusively hire the entire venue  
*Please speak with our events team for more information.*



## Working Membership

- WFH (Work From Hub)  
*\*we have a no laptop policy for non members*
- Pre-opening access to the members only mezzanine  
*Workspace from 9am Monday - Friday*
- A complimentary barista coffee, tea or soft drink every time you visit
- Free film tickets
- Discounted tickets  
*For workshops and Hub events*
- 50% off all Members Choice Food & Drink
- 20% off food for your entire table Mon-Fri and 10% off food for your entire table Sat & Sun  
*\*excluding promotional items*
- Need to work from a double screen? We have 2 available for daily hire.  
*\*Please reserve via WhatsApp concierge, or with our host.*
- Working Lunch  
*New Daily Sandwich Special, available to working members only.*
- An invitation to member only events
- The ability to exclusively hire the entire venue  
*Please speak with our events team for more information.*





Team Membership

Suitable for small business or families.

up to 10 registered users per membership with with 2 users able to work from The Hub at any one time

- WFH (Work From Hub)  
*\*we have a no laptop policy for non members*
- Pre-opening access to the members only mezzanine Workspace from 9am Monday - Friday
- A complimentary barista coffee, tea or soft drink every time you visit
- Free film tickets
- Discounted tickets  
*For workshops and Hub events*
- 50% off all Members Choice Food & Drink
- 20% off food for your entire table Mon-Fri and 10% off food for your entire table Sat & Sun  
*\*excluding promotional items*
- Need to work from a double screen? We have 2 available for daily hire.  
*\*Please reserve via WhatsApp concierge, or with our host.*
- Working Lunch  
*New Daily Sandwich Special, available to working members only.*
- An invitation to member only events
- The ability to exclusivley hire the entire venue  
*Please speak with our events team for more information.*



Membership Pricing

	Yearly	Monthly (Direct Debit)
Social	£300 inc VAT	£27.50 inc VAT
Working	£950 + VAT	£87.00 + VAT
Team	£1750 + VAT	£160 + VAT

*\*a one-off £25 joining fee will apply to all memberships*







## Meetings & Presentations

Need space? The Box & The Terrace screening rooms offer an impressive and functional backdrop for working members' meetings, presentations and corporate events.

## DDR Package

### available for up to 32 guests

*The Box Bar is suitable for a maximum of 14 guests standing*

- Exclusive hire of the agreed space.
- Use of the 120inch screen for presentation or video viewing purposes.
- Tea, coffee, orange juice & pastries on arrival.
- A fork buffet lunch.
- Lunchtime refreshments  
*tea, coffee, orange juice*

**£35 per person**

*\*additional coffee breaks are charged at £3 per person, per break*

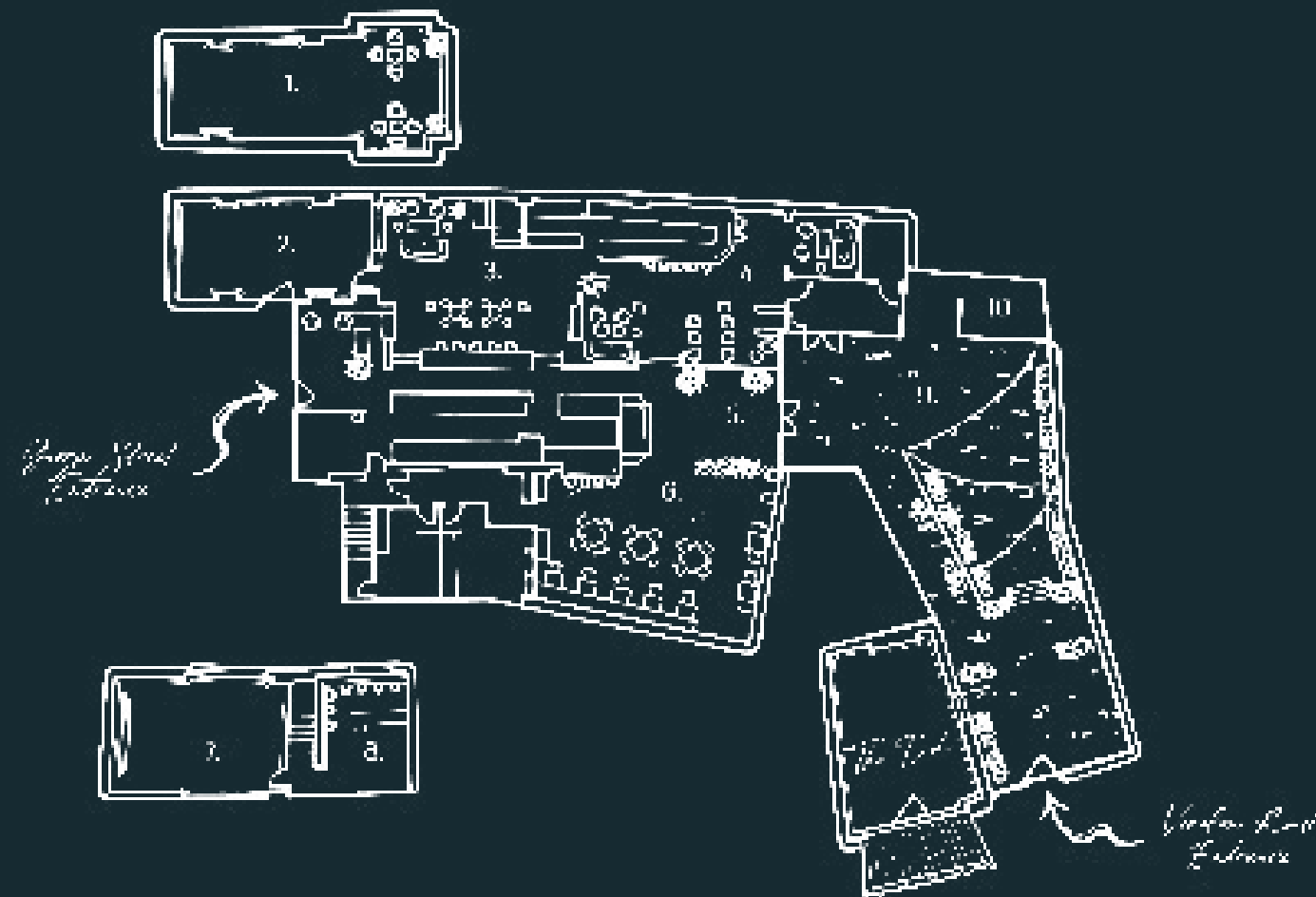
Each month members are invited to a free members only event. From cocktail masterclasses and decadent supper clubs to informative presentations from industry experts. These events are designed to quench the community's thirst for knowledge, networking and entertainment.

Places at each event are available on a first come, first served basis and if availability allows members are able to invite a plus one.

Members also receive discounts on In-house events such as our sell out 'Mini Mornings', creative workshops and live productions such as comedy nights.

## Members Events





- |              |                 |              |
|--------------|-----------------|--------------|
| 1. Mezzanine | 5. Nursery      | 9. Yard      |
| 2. Terrace   | 6. Open Kitchen | 10. Yard Bar |
| 3. Concourse | 7. Box          |              |
| 4. Bar       | 8. Box Bar      |              |

## Contacts

For membership enquiries:  
[emily@thehealthypubco.com](mailto:emily@thehealthypubco.com)

For private hire enquiries:  
[events@thehealthypubco.com](mailto:events@thehealthypubco.com)

For in-house event enquiries:  
[emma@thehealthypubco.com](mailto:emma@thehealthypubco.com)

For restaurant reservations:  
[reservations@thehealthypubco.com](mailto:reservations@thehealthypubco.com)

For anything else:  
[info@thehealthypubco.com](mailto:info@thehealthypubco.com)

01727855224  
[thehubonverulam.com](http://thehubonverulam.com)  
[@thehubonverulam](https://www.instagram.com/thehubonverulam)



THE HUB  
*on Verulam*